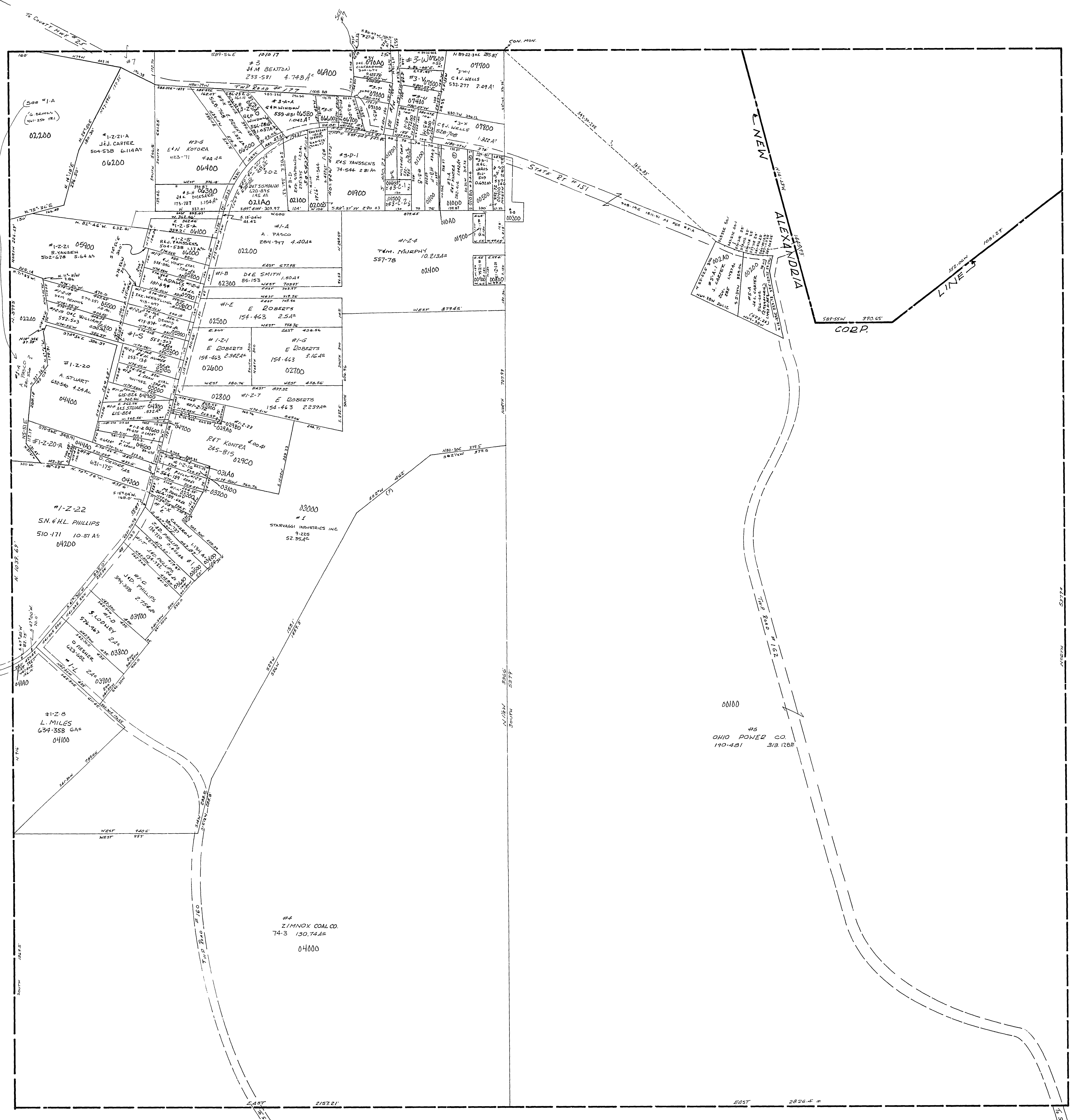


#3-W	K VANDINE	550-964	0.55 AC
#3-A-3	L SVOBODA	324-334	0.045 AC
#3-A-4	R & C JACOBS	281-665	0.193 AC
#7	AN BENTON	516-185	97.781 AC
#1-Z-20-A	T. DEVORE	632-96	1.427 AC
#1-R	AS STUAE	615-804	0.34 AC
#1-Z-21-A	J.J. CARTER	636-885	0.49 AC
#3-B	M. CARTER	607-585	0.36 AC
#3-C	M. LAYMAN	187-766	0.31 AC
#3-E	J. LEWIS	314-302	0.50 AC
#3-F	C. SHOBODA	607-330	0.52 AC
#3-G	J.M. BENTON	170-755	0.347 AC
#3-H	D. GARLOCK	517-275	0.367 AC
#3-I	W.S. KIDD	588-905	0.44 AC
#1-Z-22	PHILIPPS	505-655	24.24 AC
#1-Z-23	J. WIGGINS	370-215	20.14 AC
#1-Z-24	B.M. NASH	370-217	22.34 AC
#1-Z-25	M.E. MURPHY	251-849	0.304 AC
#1-Z-26	J. YOUNG ETAL	71-320	0.736 AC
#1-Z-27	E.B. DECESARE	420-613	1.134 AC
#1-Z-28	R.E.M. HUNTER	509-412	0.224 AC
#1-Z-29	K. CARTER ETAL	509-415	0.224 AC
#1-Z-17	E.B. DECESARE	71-320	0.429 AC
#1-Z-18	J.M. BENTON	114-592	0.439 AC
#1-Z-19	K.E.B. CARTER	427-162	0.411 AC
#1-Z-20	K.E.B. CARTER	427-162	0.411 AC
#1-Z-21	J.M. BENTON	44-131	0.441 AC
#1-Z-22	J.M. PIETRANDELO	688-905	0.405 AC
#1-Z-23	J. YOUNG ETAL	259-849	0.405 AC



50-1800-

WELLS TWP.
SEC. 18, T. 5, R. 2.
SCALE: 1"=200'